

# Methorphan

From Wikipedia, the free encyclopedia

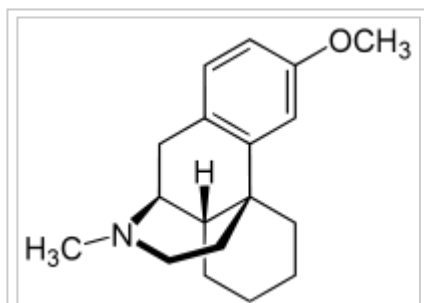
**Methorphan** comes in two isomeric forms, each with differing pharmacology and effects:

- Dextromethorphan - An over-the-counter cough suppressant, as well as dissociative hallucinogen.
- Levomethorphan - A potent opioid analgesic that was never clinically developed; the codeine analogue of the powerful opioid agonist analgesic levorphanol (Levo-Dromoran).

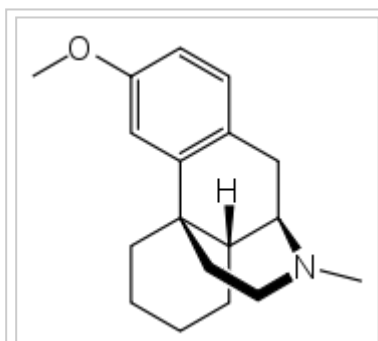
**Racemethorphan** refers to the racemic mixture of both of these stereoisomers. It is listed under the Single Convention on Narcotic Drugs 1961 and is therefore listed in the United States as a Controlled Substance, specifically as a Narcotic in Schedule II with an ACSCN of 9732 and an annual aggregate manufacturing quota of 3 grammes in 2014.<sup>[1]</sup> The salts in use are the hydrobromide (free base conversion ratio 0.770) and the tartrate (0.644)

## Methorphan

Clinical data	
<b>ATC code</b>	None
Legal status	
<b>Legal status</b>	<span><span></span></span> <span><span></span></span> CA: Schedule I <span><span></span></span> <span><span></span></span> DE: Anlage I (Authorized scientific use only) <span><span></span></span> <span><span></span></span> UK: Class A <span><span></span></span> <span><span></span></span> US: Schedule II <span><span></span></span> <span><span></span></span> UN: Psychotropic Schedule I
Identifiers	
<b>IUPAC name</b>	
<b>CAS Number</b>	510-53-2 ( <a href="http://www.commonchemistry.org/ChemicalDetail.aspx?ref=510-53-2">http://www.commonchemistry.org/ChemicalDetail.aspx?ref=510-53-2</a> ) <span>✗</span>
<b>PubChem CID</b>	3008 ( <a href="https://pubchem.ncbi.nlm.nih.gov/compound/3008">https://pubchem.ncbi.nlm.nih.gov/compound/3008</a> )
<b>ChemSpider</b>	2901 ( <a href="http://www.chemspider.com/Chemical-Structure.2901.html">http://www.chemspider.com/Chemical-Structure.2901.html</a> ) <span>✗</span>
<b>UNII</b>	8YB8F78WM1 ( <a href="https://fdass.nlm.nih.gov/srs/srsdirect.jsp?regno=8YB8F78WM1">https://fdass.nlm.nih.gov/srs/srsdirect.jsp?regno=8YB8F78WM1</a> )
<b>ChEMBL</b>	CHEMBL22207 ( <a href="https://www.ebi.ac.uk/chembl/db/index.php/compound/inspect/CHEMBL22207">https://www.ebi.ac.uk/chembl/db/index.php/compound/inspect/CHEMBL22207</a> ) <span>✗</span>
Chemical and physical data	
<b>Formula</b>	C <sub>18</sub> H <sub>25</sub> NO
<b>Molar mass</b>	271.40 g·mol <sup>−1</sup>
<b>3D model (JSmol)</b>	Interactive image ( <a href="https://chemapps.stolaf.edu/jmol/jmol.php?model=CN1CCC23CCCCC2C1CC4%3DC3C%3DC%28C%3DC4%29OC">https://chemapps.stolaf.edu/jmol/jmol.php?model=CN1CCC23CCCCC2C1CC4%3DC3C%3DC%28C%3DC4%29OC</a> )
<b>SMILES</b>	
<b>InChI</b>	



Dextromethorphan



Levomethorphan

## See also

- Morphinan
- Racemorphan

## References

1. [http://www.deadiversion.usdoj.gov/quotas/conv\\_factor/index.html](http://www.deadiversion.usdoj.gov/quotas/conv_factor/index.html)

Retrieved from "<https://en.wikipedia.org/w/index.php?title=Methorphan&oldid=734079360>"

- 
- This page was last edited on 12 August 2016, at 00:43.
  - Text is available under the Creative Commons Attribution-ShareAlike License; additional terms may apply. By using this site, you agree to the Terms of Use and Privacy Policy. Wikipedia® is a registered trademark of the Wikimedia Foundation, Inc., a non-profit organization.