



Honorable Timothy C. Evans, Chief Judge

Select Language ▼

Powered by  Google Translate

Search Our Site for...

Thursday, July 16, 2015

ABOUT THE COURT

FOR ATTORNEYS / LITIGANTS

FOR JURORS

FOR PEOPLE WITHOUT LAWYERS

MEDIA

Organization of the Circuit Court

The Circuit Court of Cook County of the State of Illinois is the largest of the 24 judicial circuits in Illinois and one of the largest unified court systems in the world. It has more than 400 judges who serve the 5.1 million residents of Cook County within the City of Chicago and its 126 surrounding suburbs. More than 1.2 million cases are filed each year.

The Circuit Court of Cook County was created by a 1964 amendment to the Illinois Constitution which reorganized the courts in Illinois. The amendment effectively merged the often confusing and overlapping jurisdictions of Cook County's previous 161 courts into one uniform and cohesive court of general jurisdiction.

Today, the Circuit Court of Cook County is a unified court system in which all trial courts are consolidated under the chief judge, Honorable Timothy C. Evans, who has centralized authority to coordinate and supervise the administrative functions of the court.

Chief Judge Evans is responsible for the assignment of approximately 400 judges throughout the court's ten divisions and six geographic districts and the appointment of a presiding judge to head each division and district. The Chief Judge also oversees the court's Surety Section and the Juvenile Justice and Child Protection Resource Section, appointing a judge to head each of those sections as well.

The [Office of the Chief Judge](#) is the administrative arm of the court. It prepares the court's annual budget and supervises more than 2,000 non-judicial employees who work in 13 offices that provide probation and other court-support services, including court reporting and foreign language interpreting.

For administrative and management purposes, the court has divided Cook County into six geographic subdistricts. This allows the court to better serve the county's large population.

The Circuit Court's six districts and the areas which they serve are:

First Municipal District - Chicago	City of Chicago
Second Municipal District - Skokie	Northern suburbs of Cook County
Third Municipal District - Rolling Meadows	Northwestern suburbs of Cook County
Fourth Municipal District - Maywood	Western suburbs of Cook County
Fifth Municipal District - Bridgeview	Southwestern suburbs of Cook County
Sixth Municipal District - Markham	Southern suburbs of Cook County

To accommodate its vast caseload, the court is organized into into three functional departments: [County](#), [Municipal](#) and [Juvenile Justice and Child Protection](#).

Org Chart

District Map

Circuit Court Overview Home

Organization of the Circuit Court

Office of the Chief Judge

Offices of the Presiding Judges

Judges Information

County Department

Juvenile Justice & Child Protection

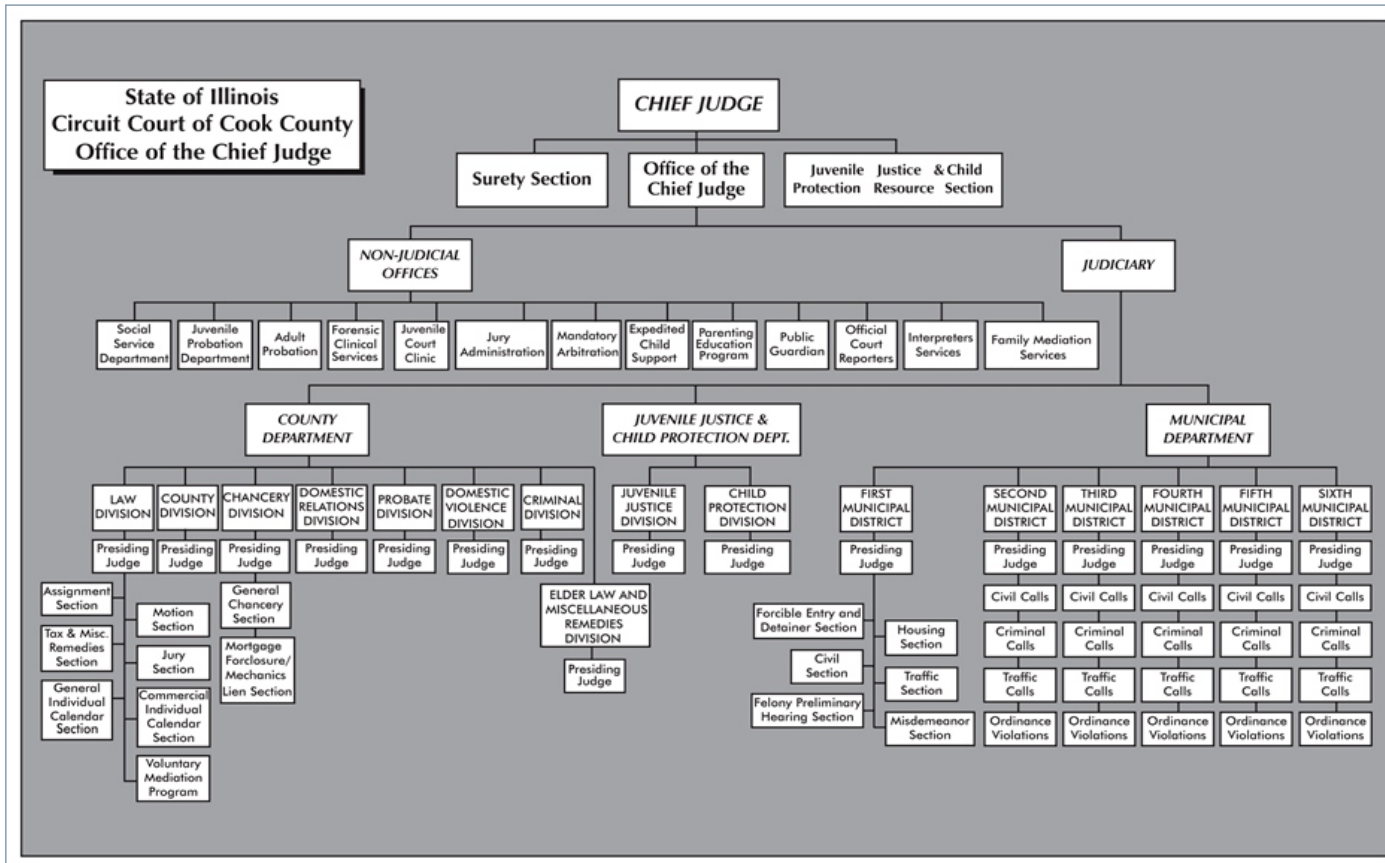
Municipal Department

Court Locations

Legal Court Holidays

The Trial Process

Local Agencies and Resources


[Privacy Policy](#)
[Disclaimer](#)
[Legal Holiday Schedule](#)
[Rules of the Court](#)
[Orders of the Court](#)
[Glossary of Legal Terms](#)
[Illinois Supreme Court](#)

Copyright 2015 by Circuit Court of Cook County