



WIKIPEDIA
The Free Encyclopedia

[Main page](#)
[Contents](#)
[Featured content](#)
[Current events](#)
[Random article](#)
[Donate to Wikipedia](#)
[Wikipedia store](#)

[Interaction](#)


[Help](#)
[About Wikipedia](#)
[Community portal](#)
[Recent changes](#)
[Contact page](#)

[Tools](#)

[What links here](#)
[Related changes](#)
[Upload file](#)
[Special pages](#)
[Permanent link](#)
[Page information](#)
[Wikidata item](#)
[Cite this page](#)

[Print/export](#)

[Create a book](#)
[Download as PDF](#)
[Printable version](#)

[Languages](#) 

[Deutsch](#)
[Español](#)
[فارسی](#)
[Français](#)
[한국어](#)
[Magyar](#)
[Nederlands](#)
[Português](#)
[中文](#)

 [Edit links](#)

Article [Talk](#)

Read [Edit](#) [View history](#)



Intervertebral foramina

From Wikipedia, the free encyclopedia

The **intervertebral foramen** (also called **neural foramina**, and often abbreviated as **IV foramina** or **IVF**), is a *foramen* between two *spinal vertebrae*. *Cervical*, *thoracic*, and *lumbar vertebrae* all have intervertebral foramina.

The foramina, or openings, are present between every pair of vertebrae in these areas. A number of structures pass through the foramen. These are the root of each *spinal nerve*, *dorsal root ganglion*, the spinal artery of the segmental artery, *communicating veins* between the internal and external plexuses, *recurrent meningeal (sinu-vertebral) nerves*, and transforaminal ligaments.

When the spinal *vertebrae* are articulated with each other the bodies form a strong pillar for the support of the head and trunk, and the *vertebral foramen* constitutes a canal for the protection of the medulla spinalis (*spinal cord*).

The size of the foramina is variable due to placement, pathology, spinal loading, and posture.

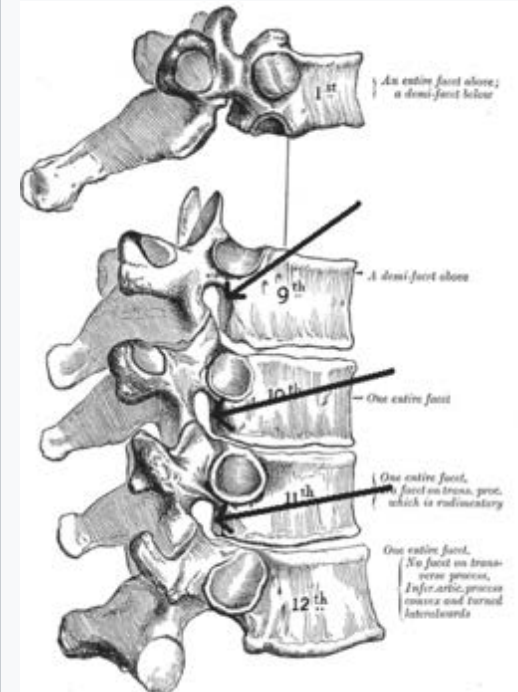
Foramina can be occluded by *arthritic* degenerative changes and space-occupying lesions like *tumors*, *metastases* and *spinal disc herniations*.

Specifically the intervertebral foramen is bound by the superior notch of the adjacent vertebra, the inferior notch of the vertebra, the vertebral body, and facet joints on the transverse process of the vertebra.

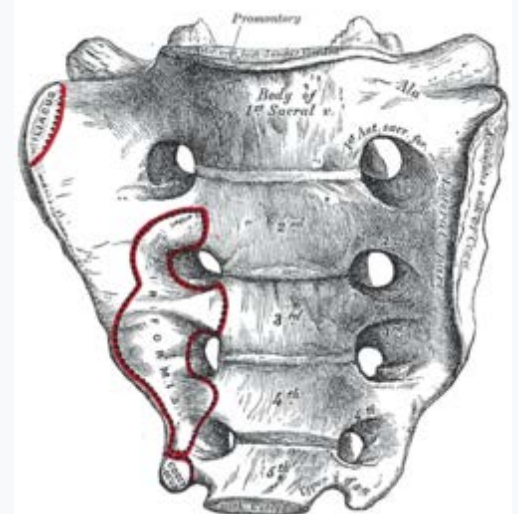
References [\[edit\]](#)

*This article incorporates text in the [public domain](#) from the 20th edition of *Gray's Anatomy* (1918)*

Intervertebral foramina



Peculiar thoracic vertebrae. Intervertebral foramina are indicated by arrows.



Sacrum, pelvic surface. (The two columns of four holes are the intervertebral foramina of sacrum, visible but not labeled.)

Details

External links [edit]

- Photo of model at Waynesburg College *skeleton2/intervertebralforamen*
- Diagram at emory.edu
- "Anatomy diagram: 06363.008-2". *Roche Lexicon - illustrated navigator*. Elsevier. Archived from the original on 2014-01-01.

Identifiers

Latin	<i>foramen intervertebrale</i> (<i>pl. foramina intervertebralia</i>)
Dorlands	<i>f_12/12373154</i>
/Elsevier	
TA	A02.2.01.008
FMA	75346

Anatomical terms of bone

[edit on Wikidata]

V · T · E	Bones of torso [hide]	
Vertebrae	General structure	Body · Arch (pedicle · lamina · notch) · Vertebral foramen · Intervertebral foramina · <i>Processes</i> (transverse · articular · spinous) · Spinal canal
	Cervical vertebrae	Uncinate process of vertebra · Transverse foramen · Anterior tubercle · Carotid tubercle · Posterior tubercle · Atlas (lateral mass · anterior arch · posterior arch) · Axis (dens) · Vertebra prominens
	Thoracic vertebrae	<i>Costal facets</i> (superior · inferior · transverse) · Uncinate process of vertebra
	Lumbar vertebrae	<i>Processes</i> (accessory · mammillary)
	Sacrum	Base (sacral promontory) · Ala of sacrum · Lateral surface (sacral tuberosity) · Pelvic surface (anterior sacral foramina) · Dorsal surface (posterior sacral foramina) · Median sacral crest · Medial sacral crest · Lateral sacral crest · Sacral canal (sacral hiatus)
	Coccyx	Coccygeal cornu
Thorax	Rib cage	Ribs (true ribs · false ribs · floating ribs) · <i>Parts</i> (angle · tubercle · costal groove · neck · head)
	Sternum	Suprasternal notch · Manubrium · Sternal angle · Body of sternum · Xiphisternal joint · Xiphoid process
	Thoracic cage	Thoracic inlet · Thoracic outlet · Intercostal space · Costal margin · Infrasternal angle

Categories:

Wikipedia articles incorporating text from the 20th edition of Gray's Anatomy (1918)

| Bones of the thorax

This page was last edited on 12 April 2017, at 08:01.

Text is available under the **Creative Commons Attribution-ShareAlike License**; additional terms may apply. By using this site, you agree to the **Terms of Use** and **Privacy Policy**. Wikipedia® is a registered trademark of the **Wikimedia Foundation, Inc.**, a non-profit organization.

Privacy policy **About Wikipedia** **Disclaimers** **Contact Wikipedia** **Developers** **Cookie statement** **Mobile view**

