



A	B	C
D	E	F
G	H	I
J	K	L
M	N	O
P	Q	R
S	T	U
V	W	X
Y	Z	?

<Previous Next > [Search](#) Contents **ONET** NEW [Link to this page](#) About

www.occupationalinfo.org

Like 0

Google



www.theodora.com

CODE: 556.685-038

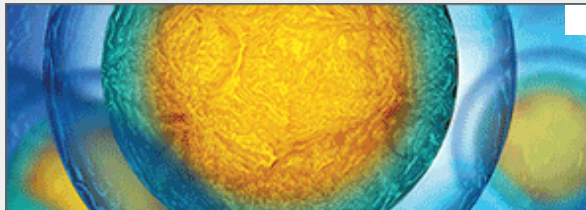
Buy the DOT: [Download](#)

TITLE(s): **INJECTION-MOLDING-MACHINE TENDER** (plastic prod.; recording; rubber goods)

Tends injection-molding machines that form plastic or rubber products, such as typewriter keys, phonograph records, and luggage handles: Dumps plastic powder, preformed plastic pellets, or preformed rubber slugs into hopper of molding machine. Starts machine that automatically liquefies pellets, slugs, or powder in heating chamber, injects liquefied material into mold, and ejects molded product. Observes gauges to ensure specified molding temperature and pressure are maintained. Examines molded product for surface defects, such as dents and cracks. May heat plastic material over steamtable or in oven to prepare material for molding. May remove product from mold, using handtools. May trim flash from product, using shears or knife. May place product in cold water or position it on cooling fixture to prevent distortion.

GOE: 06.04.10 STRENGTH: L GED: R2 M1 L1 SVP: 2 DLU: 81

[ONET](#) CROSSWALK: [91905 Plastic Molding and Casting Machine Operators and Tenders](#)



Certified GMP facilities

[Learn more](#)

gibco
by Thermo Fisher Scientific



Google Chrome



Continue your browsing experience from desktop to

phone on Chrome.

www.occupationalinfo.org

www.theodora.com

Visited on 05/01/2018

- [Dictionary of Occupational Titles \(DOT\) Index](#)
- [Standard Industrial Classifications \(SIC\) Index](#)
- [Occupational Information Network \(ONET\) Index](#)
- [US Census Statistical Tables](#)
- [China Statistical Tables](#)
- [World Facts](#)
- [Quick Maps \(for your web site\)](#)
- [Flags of All Countries \(for your web site\)](#)
- [Digraphs - Internet Country Codes](#)
- [Airport Codes](#)
- [Seaport Codes](#)
- [About Climate \(+ Glossary\)](#)
- [Immigration Superhighway](#)
- [ITA Main Page](#)

[Feedback](#) geographic.org



URL address of this page: <https://occupationalinfo.org/55/556685038.html>

[Language Translations](#)

| | [Espapol](#) | [Children](#) | [Lawyers](#) | [E-mail](#)

"Immigration Superhighway", "Immigration Central", "Immigration Assistant", "Immigration Expert", "Immigration Expert Pro" and "Immigration USA" are trademarks of Information Technology Associates.

© 1995 - 2015 [Photius Coutsoukis](#) and [Information Technology Associates](#) (All Rights Reserved).

[www.theodora.com](#)

Revised 26-May-03