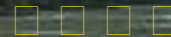




State of Wisconsin

Department of Agriculture, Trade and Consumer Protection



[ONLINE SERVICES](#)

[LICENSES/PERMITS](#)

[PUBLICATIONS](#)

[PROGRAMS/SERVICES](#)

[GROWING WISCONSIN](#)

[NEWS/MEDIA](#)

[ABOUT US](#)

[DATCP Home](#) > [Getting Started with Food, Dairy and Recreational Licensing](#)

Getting Started with Food, Dairy and Recreational Licensing

Simply fill out this information and click "SUBMIT" to receive fast and accurate information from the Department's licensing specialists. Be sure that the information you provide is accurate and that the contact information is where we can best reach you during business hours.

You can expect a telephone call or an e-mail response from your licensing specialist often within 1-2 business days to walk you step by step through the licensing process.

* All fields are required.

Contact Name:

Contact Email:

Contact phone:

Business Name:

This business is : New Existing/Expanding

Business Location county: --Select One--

License Type: --Select Type--

Additional Comments:

Contact

Licensing Consultant

(608) 224-4923

datcpdfslicensing@wi.gov

Contact Information

2811 Agriculture Dr.
P.O. Box 8911
Madison, WI 53708-8911
(608) 224-5012
(608) 224-5058 (TDD)

[Legal/Acceptable Use](#)
[Meeting & Public Hearing Notices](#)
[Public Records](#)
[State Employee Directory](#)

[A-Z Topics](#)
[Employment](#)
[Translate](#)
[Sign Up for Email Updates](#)
[Support](#)

