

ADVERTISEMENT



Search Pill Identifier Search

Like Us Follow Us About Us

June 24, 2014

- HOME
- DRUGS A-Z
- PILL IDENTIFIER
- SUPPLEMENTS
- SLIDESHOWS
- IMAGES
- SYMPTOM CHECKER
- DISEASES
- DICTIONARY
- QUIZZES

home > drugs a-z list > savella (milnacipran hcl tablets) side effects drug center > savella (milnacipran hcl tablets) drug

- Savella
- Side Effects Center
- Drug Description
- Indications & Dosage
- Side Effects & Drug Interactions
- Warnings & Precautions
- Overdosage & Contraindications
- Clinical Pharmacology
- Medication Guide
- Consumer
- Patient

- Featured Topics
- Multiple Sclerosis
- Living With Adult ADHD
- DVT Slideshow
- Childhood ADHD Facts
- Rheumatoid Arthritis Slideshow
- What is Hepatitis C?

- Related Drugs
- Ativan
- Avinza
- Butrans
- Celebrex
- Combunox
- Cymbalta
- Elavil
- Exalgo
- Flexeril
- Lioresal Intrathecal
- Lyrica
- Neurontin
- Opana ER
- Orudis
- Palladone
- Tivorbex
- Ultracet
- Ultram
- Ultram ER

« Previous 1 2 3 4 5 6 7 8 9 10 11 12 13 Next »

Savella User Reviews >>

Savella



- Fibromyalgia Overview Slideshow
- Take the Fibromyalgia Quiz IQ
- Fibromyalgia Slideshow: 12 Tips for Coping

Savella® (milnacipran HCl) Tablets

Savella Patient Information: Details with Side Effects

WARNING

SUICIDALITY AND ANTIDEPRESSANT DRUGS

Savella is a selective serotonin and norepinephrine reuptake inhibitor (SNRI), similar to some drugs used for the treatment of depression and other psychiatric disorders. Antidepressants increased the risk compared to placebo of suicidal thinking and behavior (suicidality) in children, adolescents, and young adults in short-term studies of major depressive disorder (MDD) and other psychiatric disorders. Anyone considering the use of such drugs in a child, adolescent, or young adult must balance this risk with the clinical need. Short-term studies did not show an increase in the risk of suicidality with antidepressants compared to placebo in adults beyond age 24; there was a reduction in risk with antidepressants compared to placebo in adults aged 65 and older. Depression and certain other psychiatric disorders are themselves associated with increases in the risk of suicide. Patients of all ages who are started on Savella should be monitored appropriately and observed closely for clinical worsening, suicidality, or unusual changes in behavior. Families and caregivers should be advised of the need for close observation and communication with the prescriber. Savella is not approved for use in the treatment of major depressive disorder. Savella is not approved for use in pediatric patients [see INDICATIONS AND USAGE, WARNINGS AND PRECAUTIONS, Use in Specific Populations].

SHARE THIS ARTICLE: [Social media icons]

Psoriasis Symptoms, Causes and Treatment



VIEW SLIDESHOW

ADHD in Children
Recognize the Key Symptoms

VIEW SLIDESHOW



from WebMD.com

Healthy Resources

- How to Save Money on Health Care
- Will Health Reform Affect You?
- Your Guide to a Healthy Pregnancy

Featured Centers

- Symptoms of a Severe Allergic Reaction
- Can Baby Catch Eczema?
- How to Get Beautiful, Dandruff-Free Hair

Health Solutions From Our Sponsors

- Hearing Aid Alternative

Popular Collections

Zohydro ER

Zorvolex

Health Resources

Pain Management

Chronic Fatigue Syndrome
FAQs

Fibromyalgia FAQs

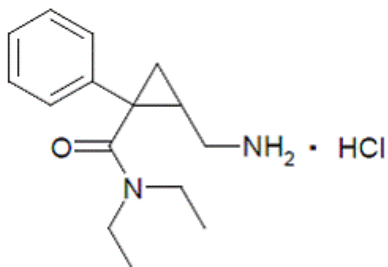


ADVERTISEMENT

[FACEBOOK](#)
[TWITTER](#)
[EMAIL](#)
[PRINT](#)


DRUG DESCRIPTION

Milnacipran hydrochloride is a selective norepinephrine and [serotonin reuptake](#) inhibitor; it inhibits norepinephrine uptake with greater potency than serotonin. It is a racemic mixture with the chemical name: (±)-[1R(S),2S(R)]-2-(aminomethyl)-N,N-diethyl-1phenylcyclopropanecarboxamide hydrochloride. The structural formula is:



Milnacipran hydrochloride is a white to off-white crystalline powder with a melting point of 179°C.

It is freely soluble in water, methanol, ethanol, [chloroform](#), and methylene chloride and sparingly soluble in diethyl ether. It has an empirical formula of C₁₅H₂₃ClN₂O and a molecular weight of 282.8 g/mol.

Savella is available for oral administration as film-coated tablets containing 12.5 mg, 25 mg, 50 mg, and 100 mg milnacipran hydrochloride. Each tablet also contains dibasic calcium phosphate, povidone, carboxymethylcellulose calcium, colloidal silicon dioxide, magnesium stearate, and talc as inactive ingredients. The film coat contains the following additional inactive ingredients:

12.5 mg

FD&C Blue #2 Aluminum Lake, polyvinyl alcohol, polyethylene glycol, titanium dioxide

25 mg

Polyvinyl alcohol, polyethylene glycol, titanium dioxide

50 mg

Polyvinyl alcohol, polyethylene glycol, titanium dioxide

100 mg

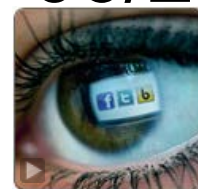
FD&C Red #40 Aluminum Lake, polyvinyl alcohol, polyethylene glycol, titanium dioxide

for patients

What are the possible side effects of milnacipran (Savella)?

Get emergency medical help if you have any of these **signs of an allergic reaction**: skin rash or hives; difficulty breathing; swelling of your face, lips, tongue, or throat.

Report any new or worsening symptoms to your doctor, such as: mood or behavior changes, anxiety, panic attacks, trouble sleeping, or if you feel impulsive, irritable, agitated, hostile, aggressive, restless, hyperactive (mentally or physically), more depressed, or have thoughts about suicide or hurting yourself.


[Concentration Killers](#)

[Rheumatoid Arthritis Exercises](#)

[Scalp, Hair and Nails](#)

[Birth Control Options & Side Effects](#)
[all images >>](#)
[all slideshows >>](#)

Recommended Topic Related To:

Savella[A Blood Test for Fibromyalgia? »](#)

"Oct. 28, 2013 -- A new blood test may predict fibromyalgia, a condition that can be hard to diagnose.

Research about the new test was presented Sunday at the annual meeting of the American College of Rheumatology in San Diego.

"...

[Read the A Blood Test for Fibromyalgia? article »](#)

Don't miss out on the latest drug information!



Follow us on **facebook**

[Click Here](#)

RxList

Pill Identifier on RxList

- quick, easy, pill identification

[Use Pill Finder >>](#)

Find a Local Pharmacy

- including 24 hour, pharmacies

[Find it Now >>](#)

Interaction Checker

- Check potential

drug interactions

[See Interactions »](#)

Search the Medical
Dictionary for Health
Definitions & Medical
Abbreviations

SEARCH

Updated & New
News & Features

Identify Your Drugs:
Use the RxList Pill Identifier
Tool

Vaccine Safety

Call your doctor at once if you have any of these serious side effects:

- pounding...

[Read All Potential Side Effects and See Pictures of Savella »](#)

What are the precautions when taking milnacipran hcl tablets (Savella)?

Before taking milnacipran, tell your doctor or pharmacist if you are allergic to it, or if you have any other allergies. This product may contain inactive ingredients, which can cause allergic reactions or other problems. Talk to your pharmacist for more details.

Before using this medication, tell your doctor or pharmacist your medical history, especially of: kidney disease, liver disease, alcohol use, glaucoma (narrow-angle), personal or family history of psychiatric disorders (such as bipolar/manic-depressive disorder), personal or family history of suicide attempts, high blood pressure, heart problems (such as chest pain, heart attack, fast/irregular heartbeat), seizure disorder, severe loss of body water (dehydration), stomach/intestinal ulcers, mineral imbalance (low level...

[Read All Potential Precautions of Savella »](#)

Last reviewed on RxList: 11/11/2013

This monograph has been modified to include the generic and brand name in many instances.

« Previous 1 2 3 4 5 6 7 8 9 10 11 12 13 Next »

Next: [Indications & Dosage](#)

Additional Savella Information

- Savella Drug Interactions Center: [milnacipran oral](#)
- [Savella Side Effects Center](#)
- [Savella in detail including Side Effects and Drug Images](#)
- [Savella Overview including Precautions](#)
- [Savella FDA Approved Prescribing Information including Dosage](#)

Savella - User Reviews

Savella User Reviews

Now you can gain knowledge and insight about a drug treatment with Patient Discussions.

Here is a collection of user reviews for the medication Savella sorted by most helpful. ?

[See User Reviews](#)

Report Problems to the Food and Drug Administration



You are encouraged to report negative side effects of prescription drugs to the FDA. Visit the [FDA MedWatch](#) website or call 1-800-FDA-1088.

WebMDnewsletter^D

[Privacy Policy](#)

Chronic Pain/Back Pain

Find tips and advances in treatment.

By clicking submit I agree to WebMD's [Privacy Policy](#)

Submit

[See All Slideshows ▶](#)

Thyroid Conditions
Thyroid Symptoms and Solutions

Diabetes and Foot Problems
How to Avoid Serious Complications

Stages of Pregnancy
1st, 2nd and 3rd Trimesters of Mom & Baby

Skin Conditions Gallery
An Image Collection of Common Skin Problems

Sex-Drive Killers
Causes of Low Libido

ADHD in Children
Recognize the Symptoms

Health Solutions From Our Sponsors

- [Rx for Alzheimer's](#)
- [Frequent Constipation?](#)
- [Low Testosterone?](#)
- [Severe Alzheimer's?](#)
- [OA Doctor Answers](#)
- [Trying to Get Pregnant?](#)
- [Stages of Alzheimer's](#)
- [Managing Diabetes](#)
- [Testosterone Treatment](#)
- [Could It Be IBS-C?](#)
- [Dupuytren's Treatment](#)
- [Implant or Hearing Aid?](#)
- [What are Probiotics?](#)
- [ED Tablet](#)
- [Alzheimer's Worsening?](#)

[RxList Home](#) | [Drugs & Medications](#) | [Slideshows](#) | [Pill Identification Tool](#) | [Vitamins, Herbs, & Dietary Supplements](#) | [Images](#) | [Diseases](#) | [Symptom Checker](#) | [Dictionary](#) | [Quizzes](#)
[About RxList](#) | [Consumer Contact RxList](#) | [Terms & Conditions](#) | [Privacy Policy](#) | [Sponsor Policy](#) | [Pharmaceutical Companies A-Z](#) | [Site Map](#)
[WebMD](#) | [Medscape](#) | [Medscape Reference](#) | [eMedicineHealth](#) | [MedicineNet](#) | [OnHealth](#) | [BootsWebMD](#) | [Medscape France](#) | [Medscape Germany](#)

Copyright © 2014 by RxList Inc.

RxList does not provide medical advice, diagnosis or treatment. See additional information.



[Ad Choices ▶](#)